

Stadieindelning av Bröstcancer med Ultraljud

Röntgenveckan 2010 Örebro, September 23

Mammografin - Bröstcentrum Södersjukhuset
Ariel Saracco Överläkare



SÖS
SÖDERSJUKHUSET

Breast cancer staging (TNM)

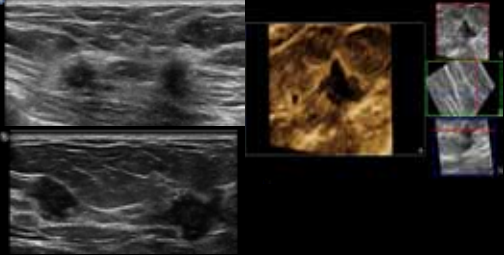
“...It is generally accepted that the most powerful predictor of outcome in breast cancer is the lymph nodes status...”
Morrow et al.

Breast cancer staging (TNM)

- **T size**
 - 1 tumor (T is done based on the single largest tumor)
 - multifocal process: multiple foci < 3 cm apart from each other
 - multicentric process: multiple foci > 3 cm apart from each other


Breast cancer staging (TNM)

Multifocality 3D ultrasound



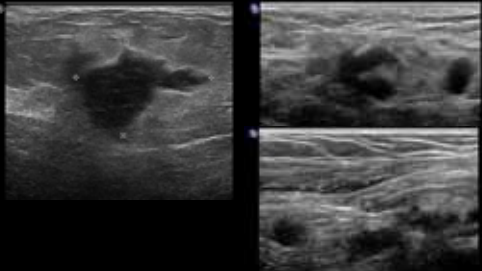
Breast cancer staging (TNM)

Inflammatory BC (T4, stage IIIB...at least)



Breast cancer staging (TNM)

Inflammatory BC Metastases axilla / FIC

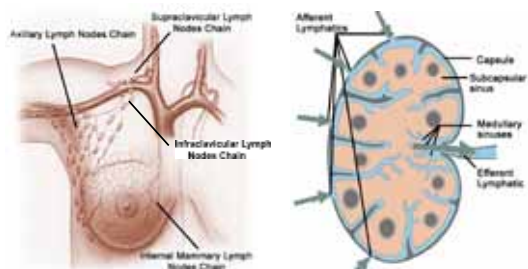


Breast cancer staging (TNM)

- T size
 - N (regional lymph nodes status)
- | |
|-------------------------|
| Axilla (+ intramammary) |
| FIC |
| FSC (+ cervical) |
| IMC |

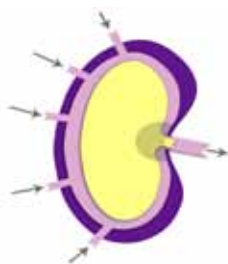
Regional Lymph nodes

(courtesy Prof. Bruno Fornage, MD Anderson Cancer Center - Houston)

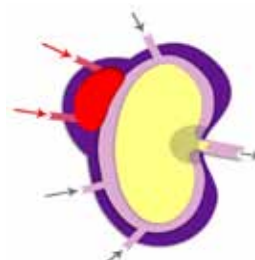


Normal Lymph nodes

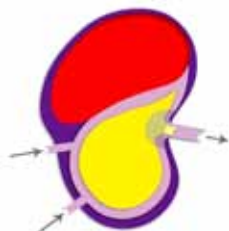
(courtesy and idea Prof. Bruno Fornage, MD Anderson Cancer Center - Houston)



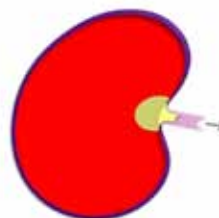
Lymph nodes metastases



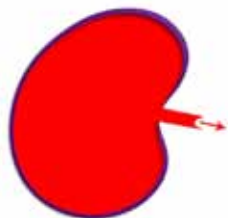
Lymph nodes metastases



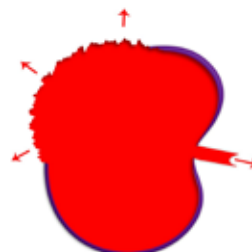
Lymph nodes metastases



Lymph nodes metastases



Lymph nodes metastases



Breast cancer staging (TNM)

• T size

• N (regional lymph nodes status)

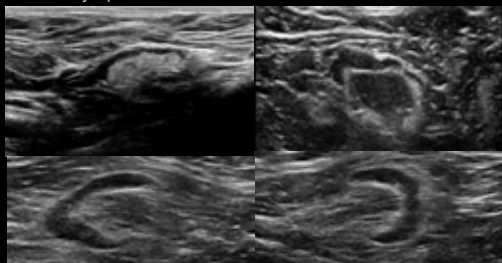
- N0: no mths
- N1: mths ip axilla (free)
- N2a: mths ip axilla (fixed)
- N2b: clinical mths ip IMC, but with axilla (-)
- N3a: mths ip FIC
- N3b: mths ip IMC + axilla
- N3c: mths ip FSC

Breast cancer staging (TNM)

- Stage 0 to Stage IIB: surgery
- Stage IIIA-IIIB: surgery vs. NAT
- Stage IIIC: any T + N3 + M0 (NAT → surgery)
- Stage IV: any T + any N + M1

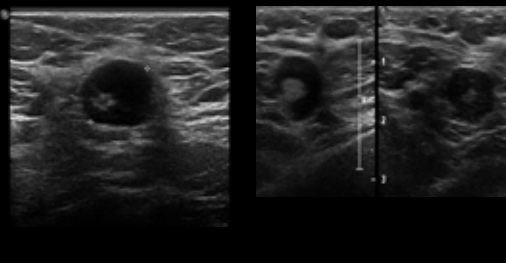
Breast cancer staging (TNM)

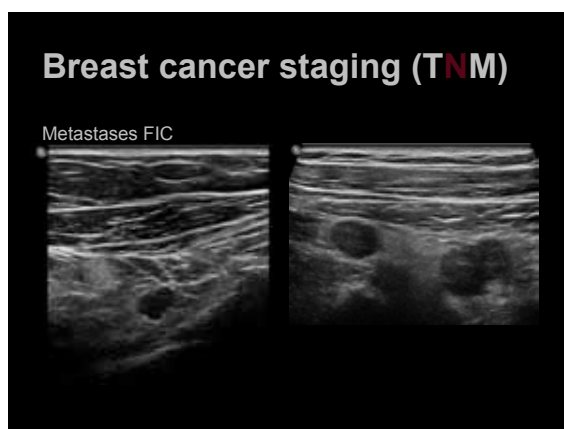
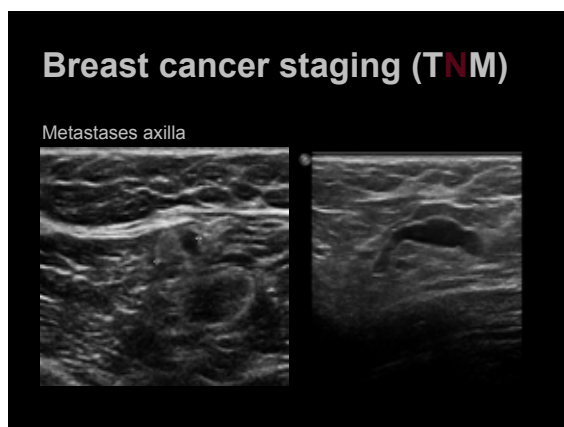
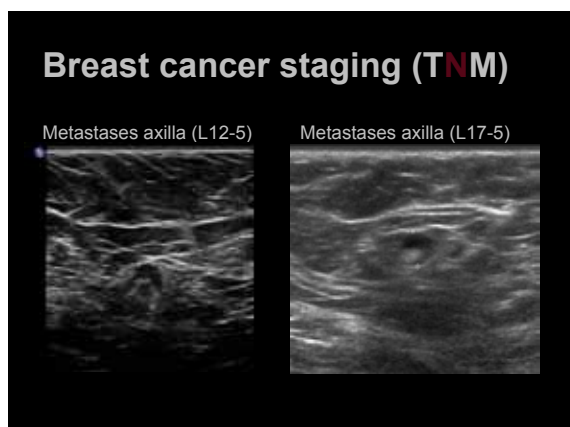
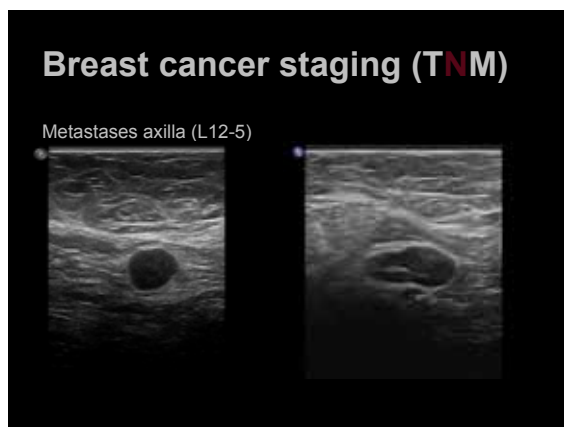
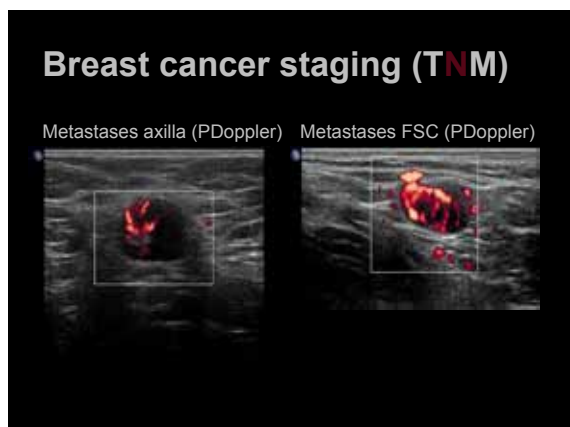
Normal Lymph nodes

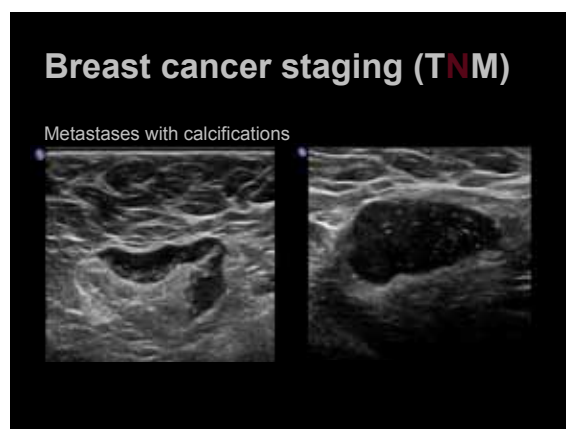
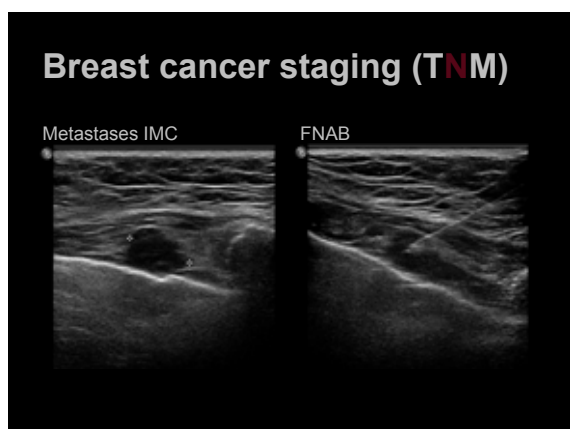
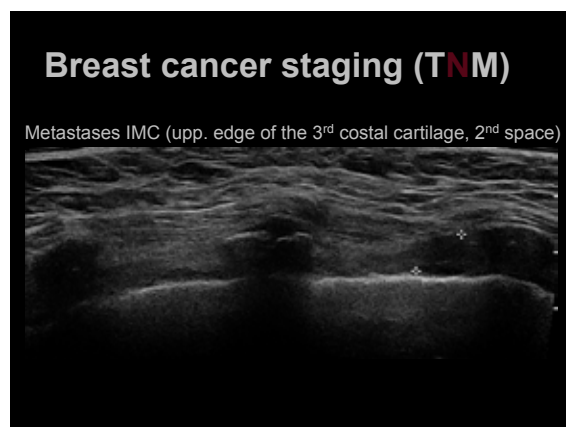
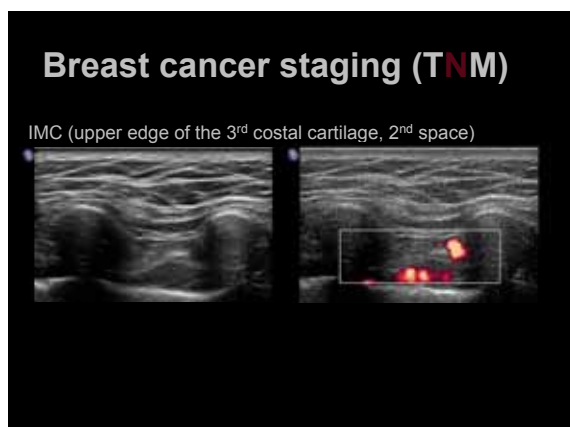
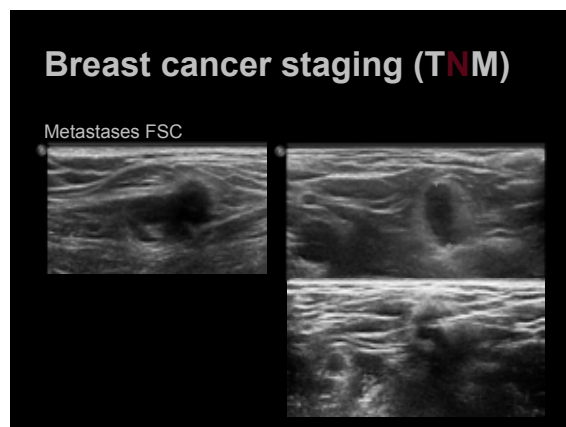
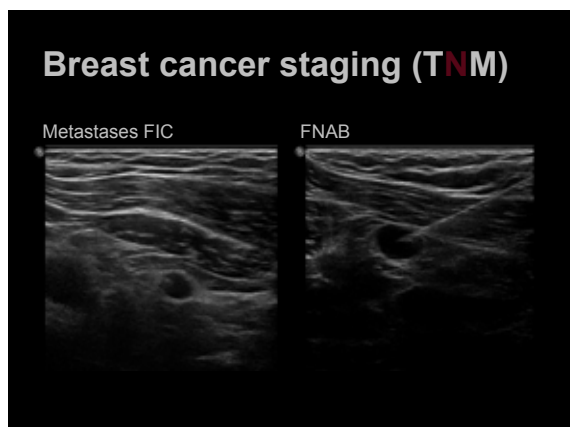


Breast cancer staging (TNM)

Metastases axilla









Breast cancer staging (TNM)

Stage 0 to Stage IIB: surgery	NX: can not be assessed N0: no mths
Stage IIIA-IIIIB: surgery? NAT?	N1: mths ip axilla (free) N2a: mths ip axilla (fixed) N2b: clinical mths ip IMC, but with axilla (-)
Stage IIIC: any T + N3 + M0 (NAT surgery) →	N3a: mths ip FIC N3b: mths ip IMC + axilla N3c: mths ip FSC
Stage IV: any T + any N + M1	

Breast cancer staging (TNM)

Conclusion

- **better outcome of surgery**
(avoid SNP → axillary clearance)
- **better outcome of NAT**
(control for back-staging)

Breast cancer staging (TNM)

“...It is generally accepted that the most powerful predictor of outcome in breast cancer is the lymph nodes status...”
Morrow et al.

