

Centrumbildning ur ett medicinskt perspektiv


Joachim Ernst Wildberger

Department of Radiology
Maastricht University Medical Center (MUMC+)
The Netherlands
j.wildberger@mumc.nl


Här skapar man en lag av 7-8 personer som lämnar
Förhållanden
Orebro, September 2011 - 2012



Most important ingredients



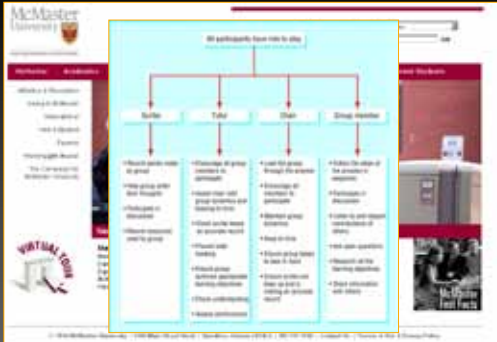
Most important ingredients



Most important ingredients



Problem Based Learning

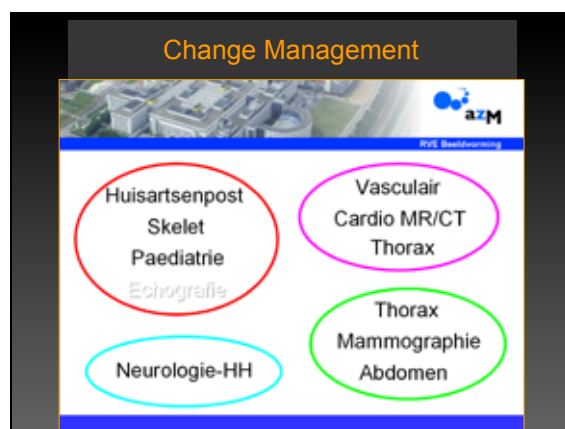
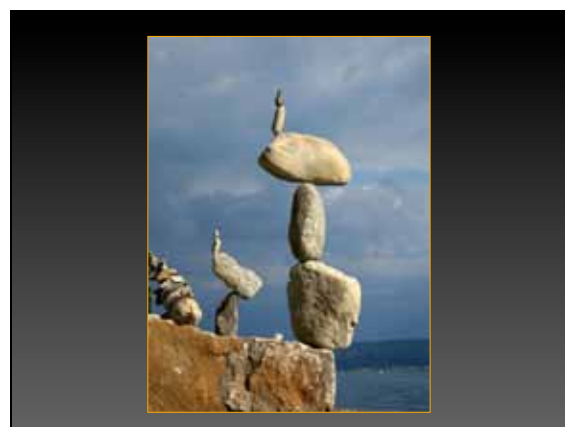
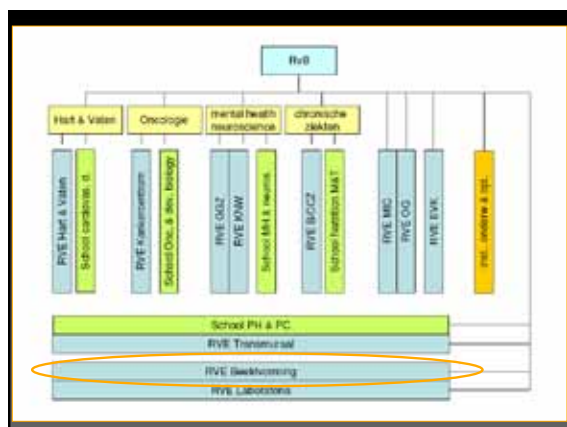


The slide features a flowchart titled "All participants have roles to play". The flowchart branches into four categories: "Teacher", "Tutor", "Scribe", and "Group members".

- Teacher:**
 - Provide gentle nudges to the group
 - Encourage group members to share their knowledge
 - Encourage group members to share their knowledge
 - Encourage group members to share their knowledge
 - Encourage group members to share their knowledge
- Tutor:**
 - Encourage group members to share their knowledge
 - Encourage group members to share their knowledge
 - Encourage group members to share their knowledge
 - Encourage group members to share their knowledge
 - Encourage group members to share their knowledge
- Scribe:**
 - Encourage group members to share their knowledge
 - Encourage group members to share their knowledge
 - Encourage group members to share their knowledge
 - Encourage group members to share their knowledge
 - Encourage group members to share their knowledge
- Group members:**
 - Encourage group members to share their knowledge
 - Encourage group members to share their knowledge
 - Encourage group members to share their knowledge
 - Encourage group members to share their knowledge
 - Encourage group members to share their knowledge

Most important ingredients





Reflection

Ulysses's syndrome

• Total cost: +25,000 €
 • Total radio load: 4,800 cGyR
 • Total serious complication load: 5% (contrast + gadolinium+stress+cath+radiation-induced cancer)

Efficacy in Imaging Research

Phase I	Concerns technical image quality
Phase II	Addresses diagnostic accuracy, sensitivity, and specificity associated with image interpretation
Phase III	Focuses on whether the information produces changes in the referring physician's diagnostic thinking
Phase IV	Concerns effects on the patient management plan (efficacy studies)
	Measures the effect of the information on patient's outcome (efficacy studies)
	Analyses and examines societal costs and benefits of diagnostic imaging technologies

Fryback DG, Thornbury JR. Med Decis Making 1991; 11: 88 - 94

Communicating Vessels

Research
 Clinics
 Education
 Management

Balanced Score Card

Balanced Score Card

TARGET

- 1. Aangegeven voorlopige doel bereikt
- 2. Toeslagplichtig

ALERE (aanpak) (aanpak) (aanpak)

- 1. Prognosefout
- 2. Ziekteverzuim
- 3. Prognosefout per ziekteverzuim

ALERE (aanpak) (aanpak) (aanpak)

- 1. Aangegeven
- 2. Aangegeven (aanpak) (aanpak)
- 3. Aangegeven (aanpak) (aanpak)
- 4. Aangegeven (aanpak) (aanpak)

ALERE (aanpak) (aanpak) (aanpak)

- 1. Aangegeven
- 2. Aangegeven
- 3. Aangegeven (aanpak) (aanpak)

Balanced Score Card

Uitvoeringsplan voor de Samenleving

■ Financiële toename
 ◆ Samenleving

